



# iWall 409R

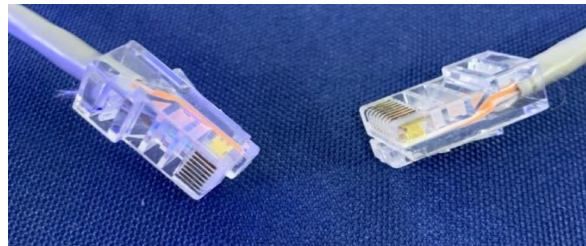
Windows Software User Manual  
V1.0

---

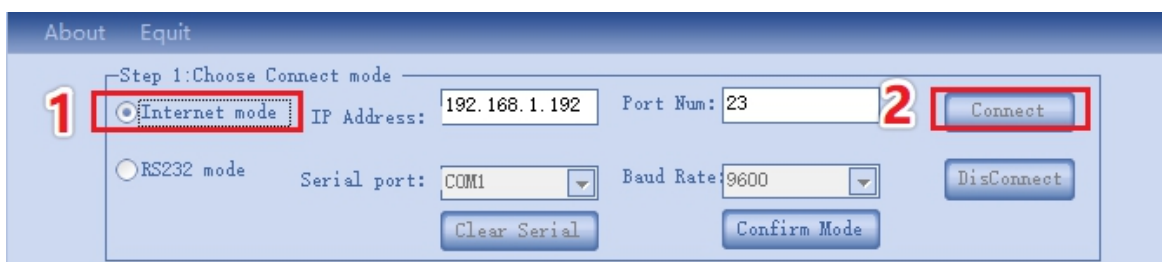
## STEP 1 Choose Connect Mode

### Internet mode:

- 1.Plugging RJ45 cable into the host computer and controller.  
(specific operation refer to the picture )

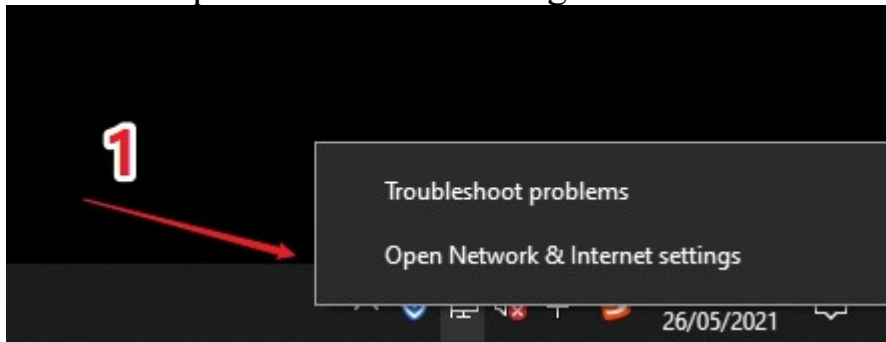


Two sides of connecting cable (RJ45)

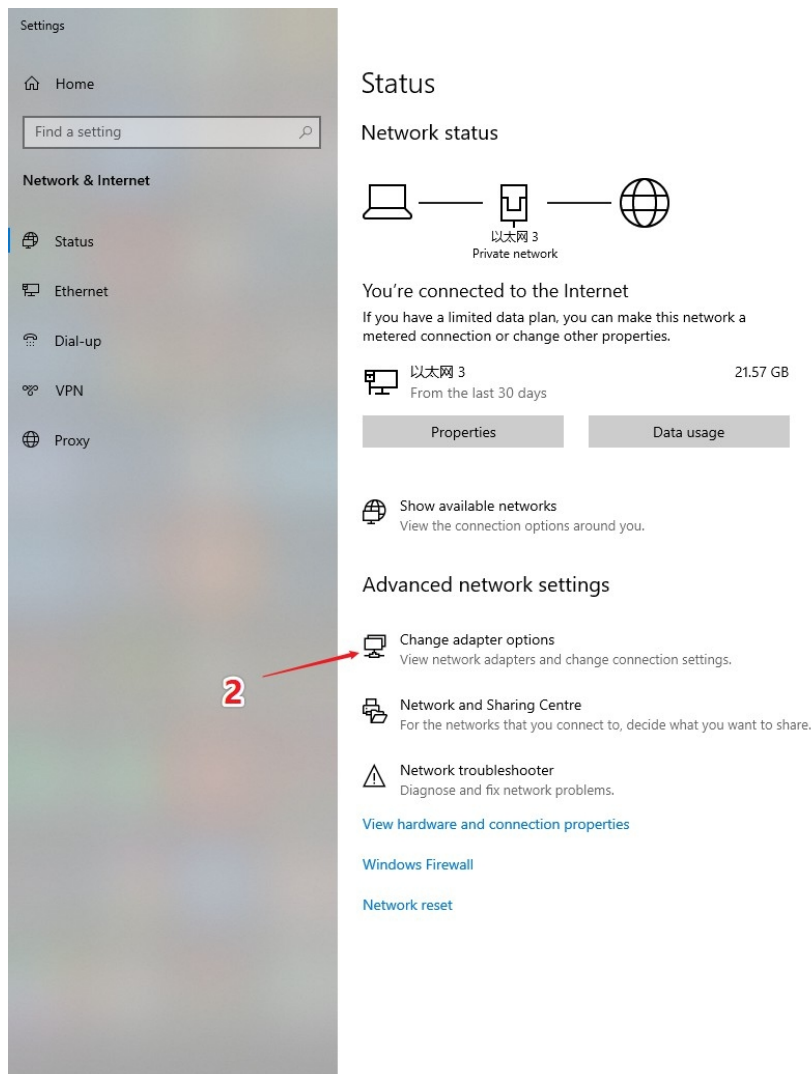


1. Open control program, enter IP address and Port num.
2. Click “connect”

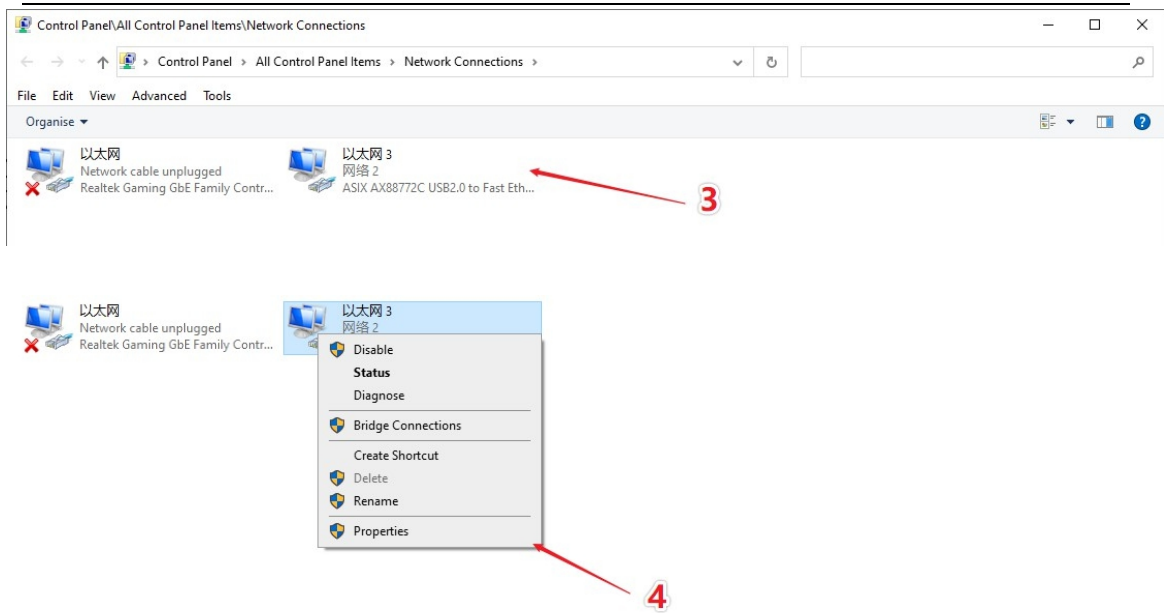
## Internet mode Computer IP address setting:



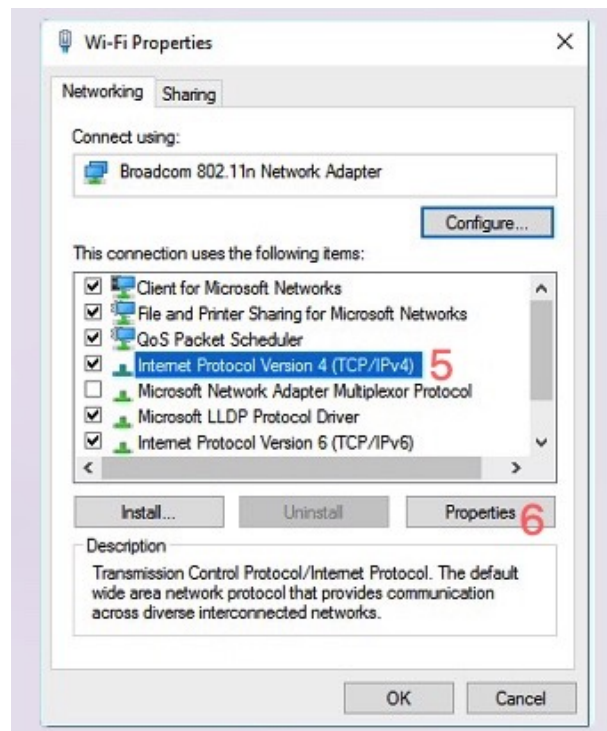
1. Right-click the “Network”, click the Open Network& Internet settings



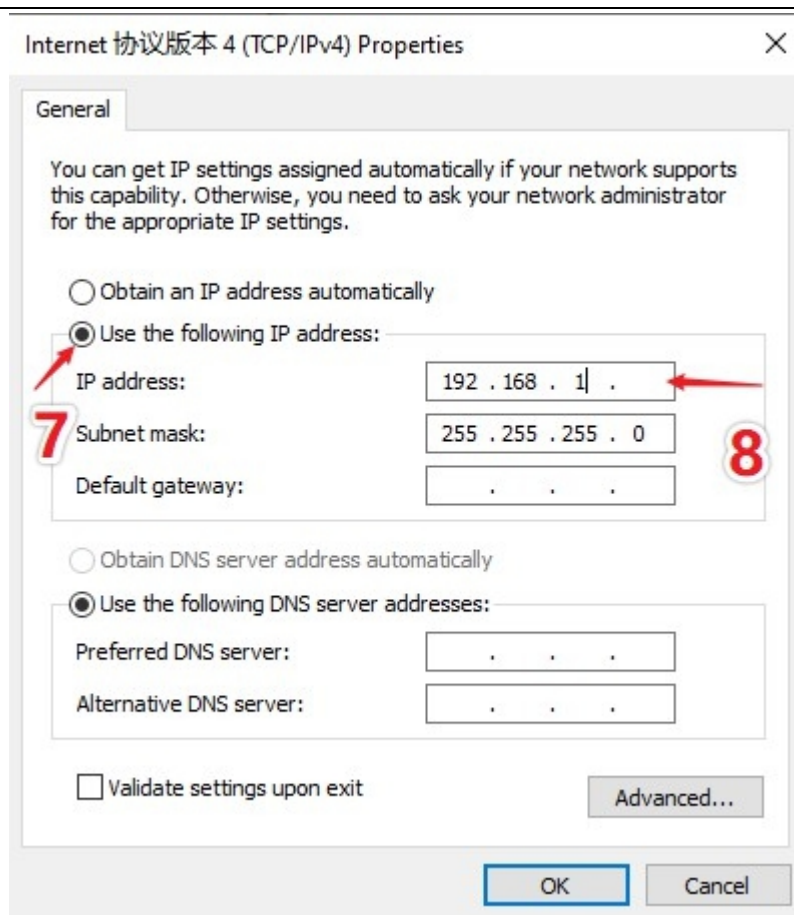
2. Click change network settings



- 3. Right-click the internet been connect.
- 4. Select properties



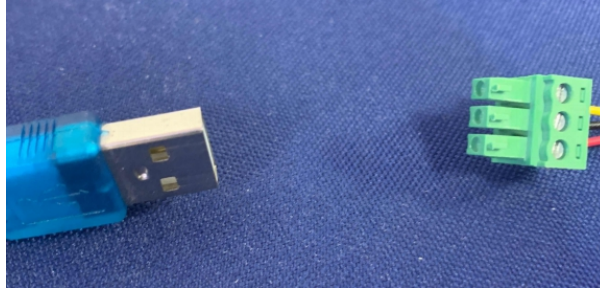
- 5. Select (TCP/IPV4)
- 6. Click properties



7. Select Use the following IP address
8. Change the IP address to 192.168.1.(from 2-254)

---

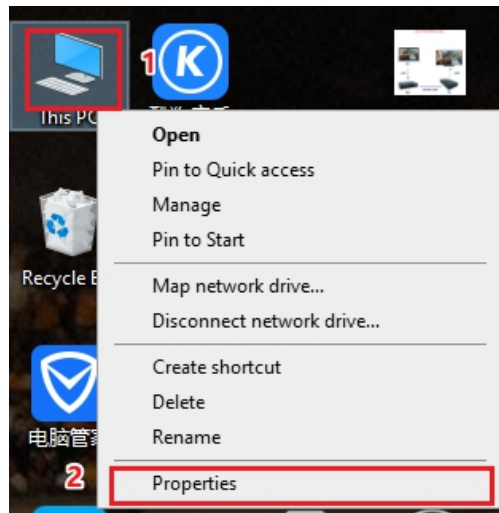
## RS232 mode:

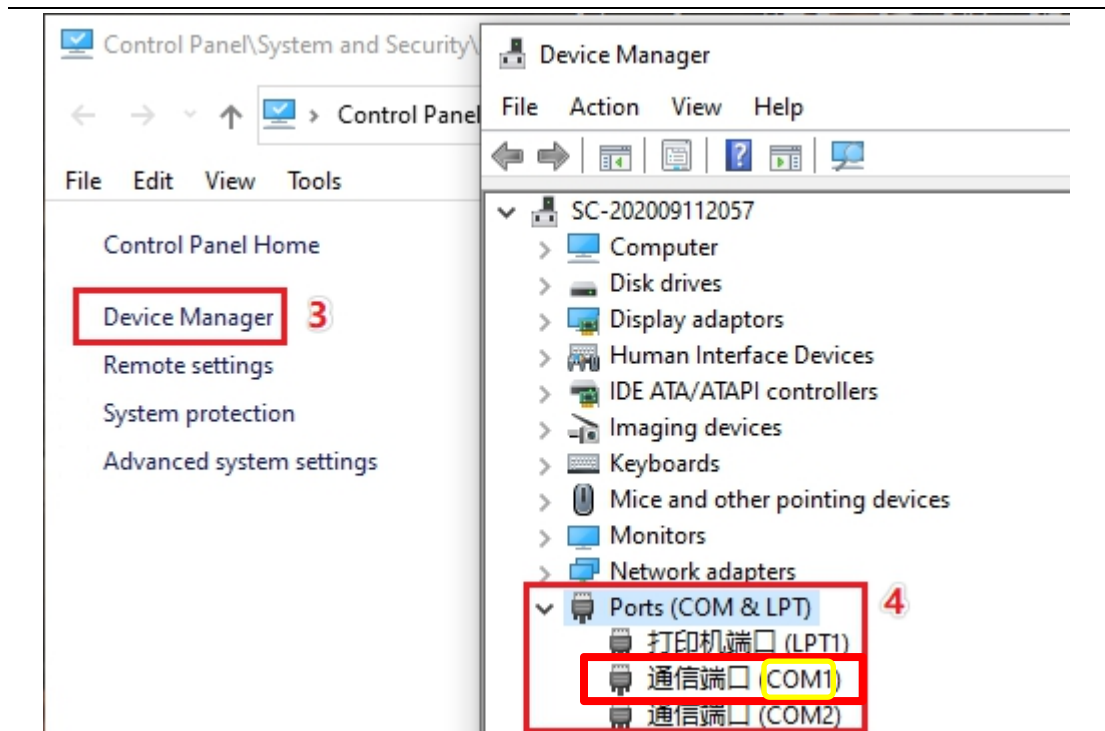


Two sides of connecting cable (Serial mode)

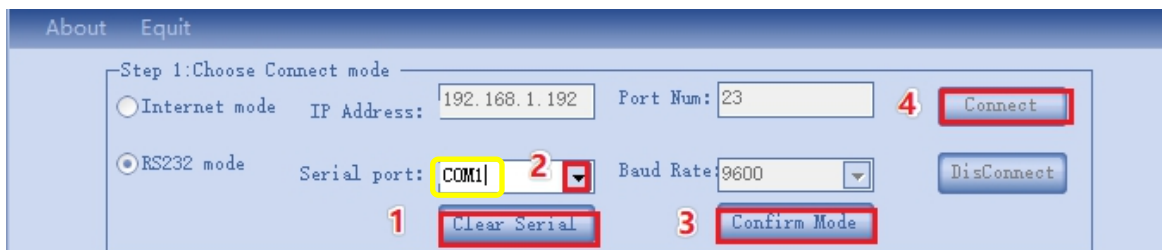
### 1. Find the corresponding port

- ① Right-click “This PC” .
- ② Select “Properties”
- ③ “Device Manager”
- ④ figure out which USB interface be plugged





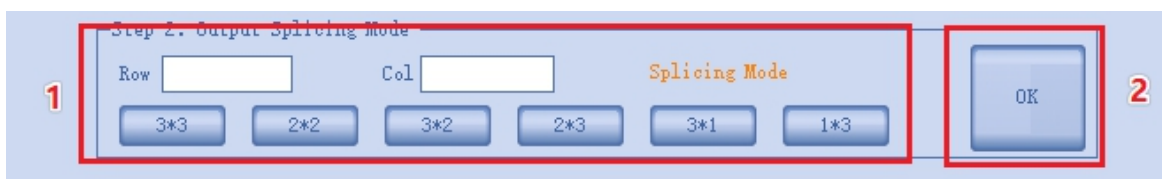
## 2. Set connection mode



- ① Click “Clear Serial”.
- ② select the plugged COM interface.
- ③ Click “Confirm Mode”(don’t need to choose “Baud Rate”)
- ④ Click “Connect”

## Step 2 Select screen splicing mode

1. Typing or click the button to select screen joint mode.
2. Click ok.





---

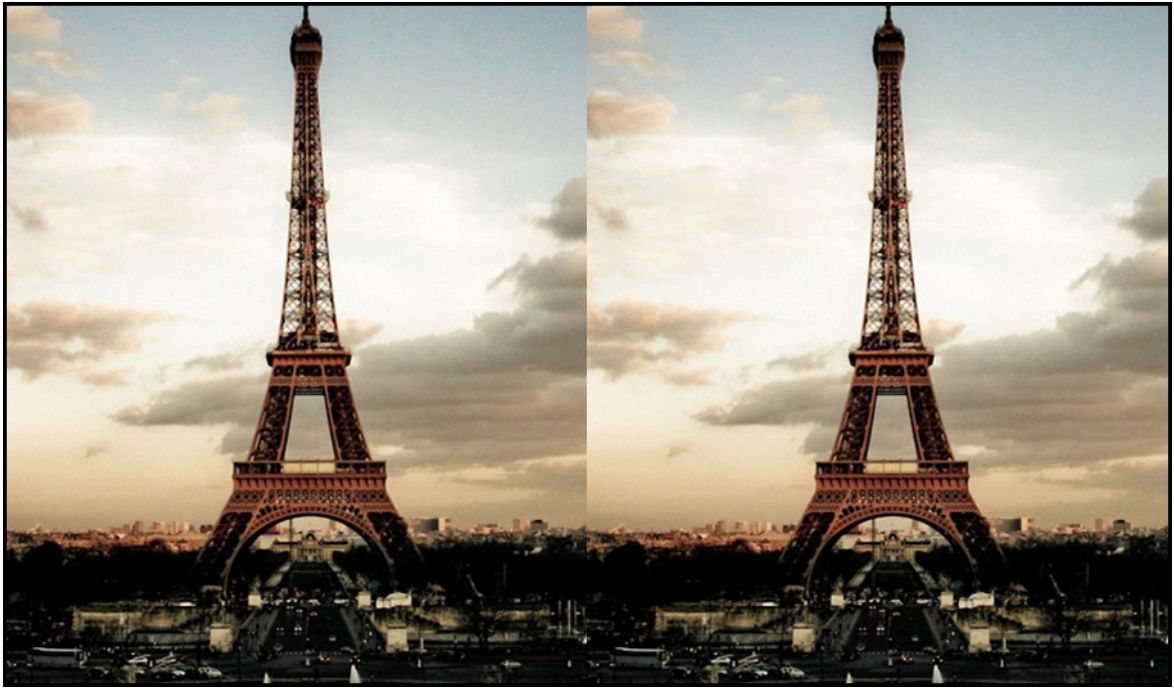
## Step 3 Select display mode

### 1. Display mode introduction

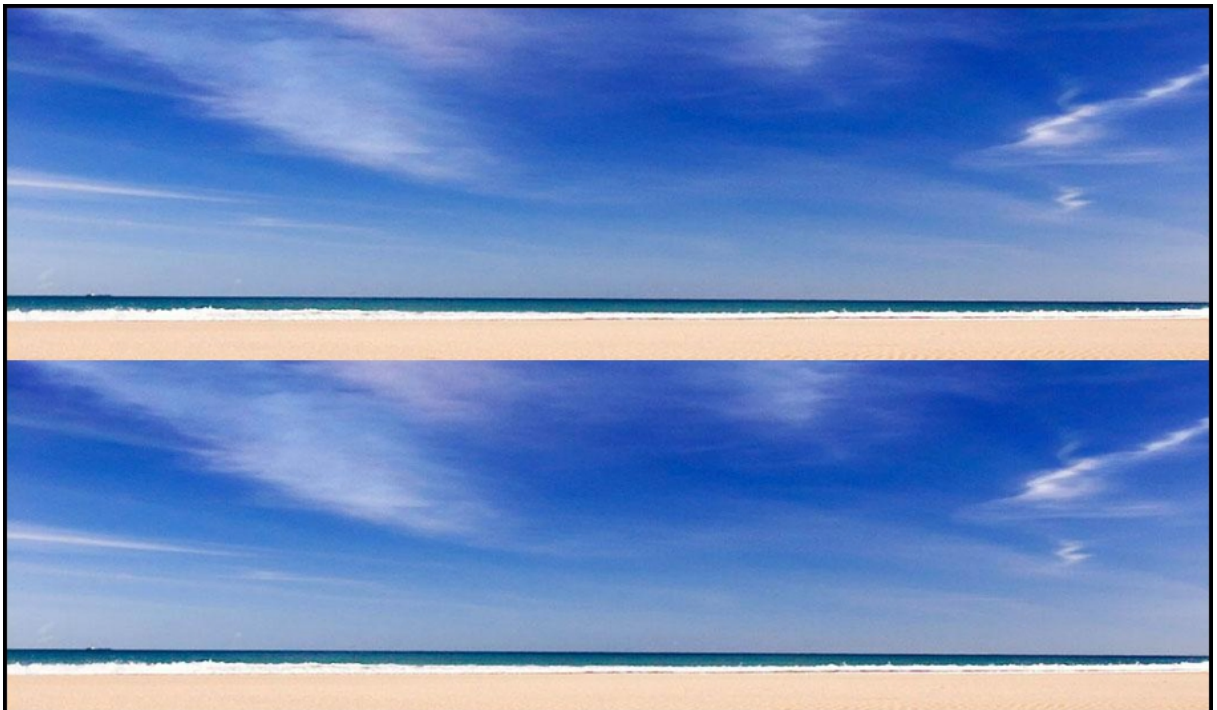


Single Mode





Left-Right Mode



Up-down mode





PIP mode



Four window mode

---

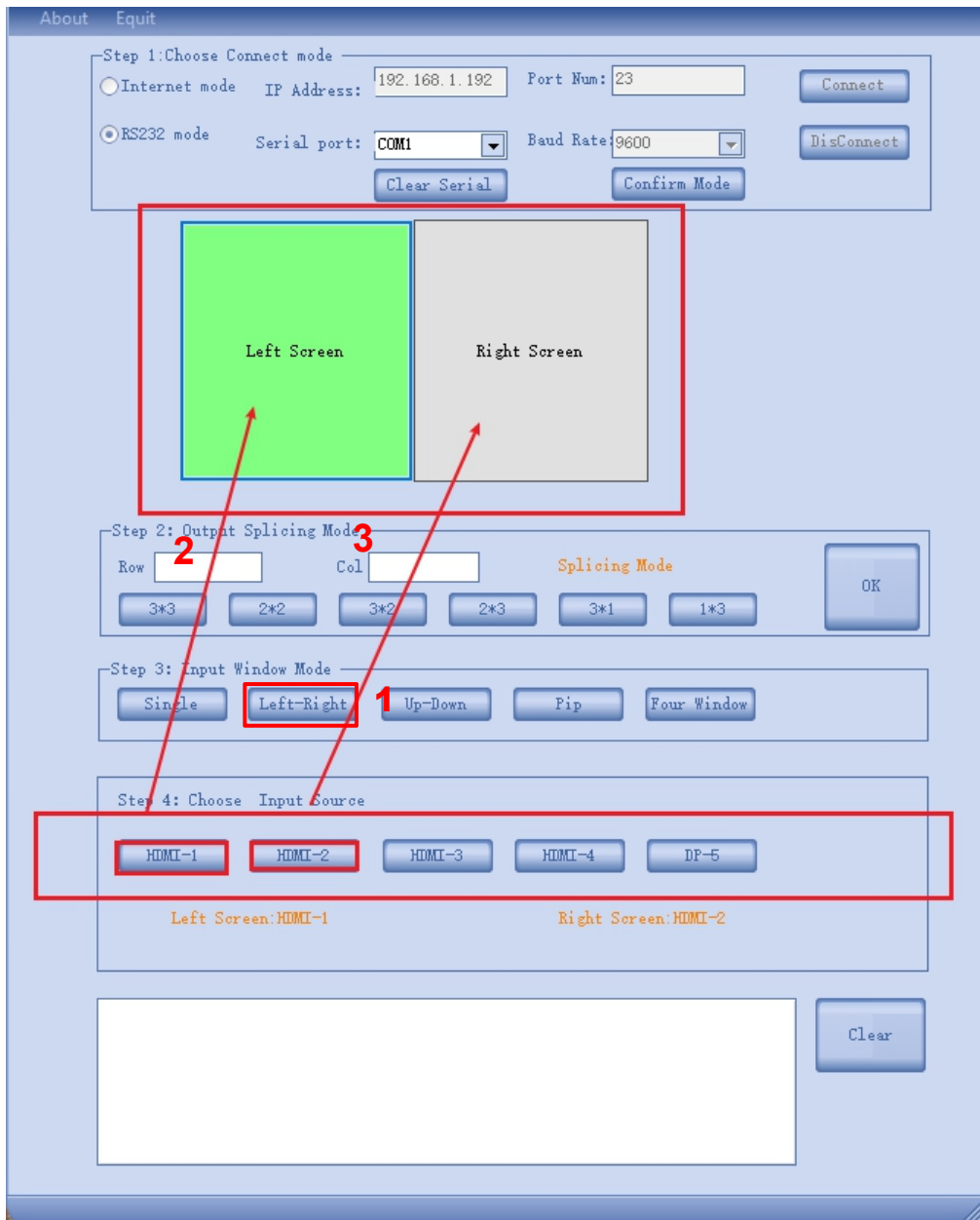
## 2. Select “Input window mode”&“Input sources”

### A. Left&right mode

1. Select “Input window mode”

2. Drag “input source” and drop into the “Left Screen”

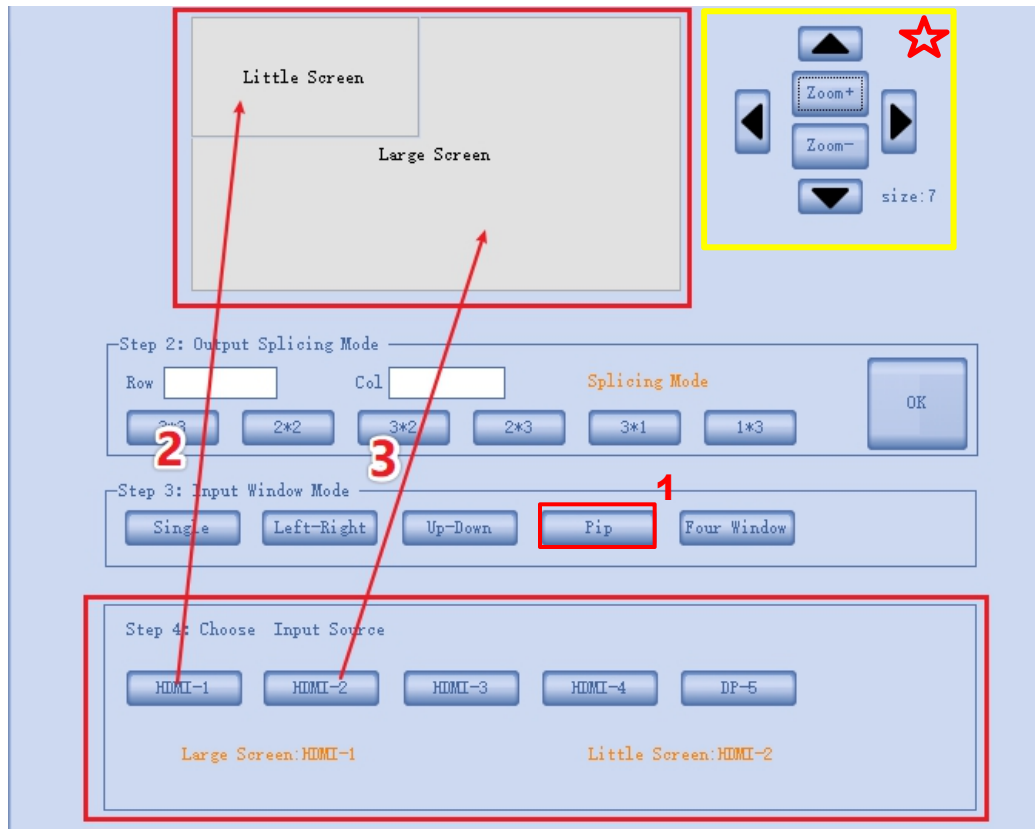
3. Drag “input source”and drop into the “Right Screen”



---

## B. PIP mode (Only could be used in Signal mode)

1. Click PIP mode
2. Drag “input source” and drop into the “Little Screen”
3. Drag “input source” and drop into the “Large Screen”



Tips:

The location & size of "sub picture" could be controlled by the marked controller.