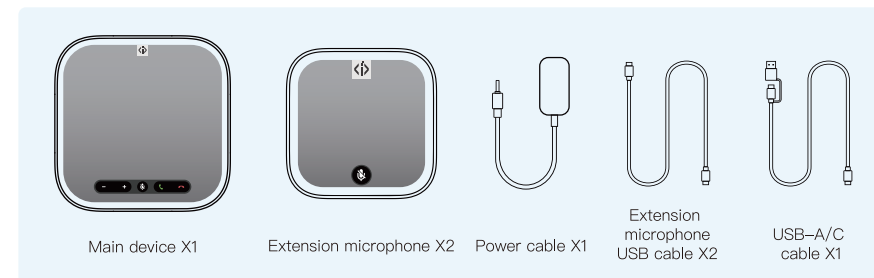


infobit iSpeaker A20



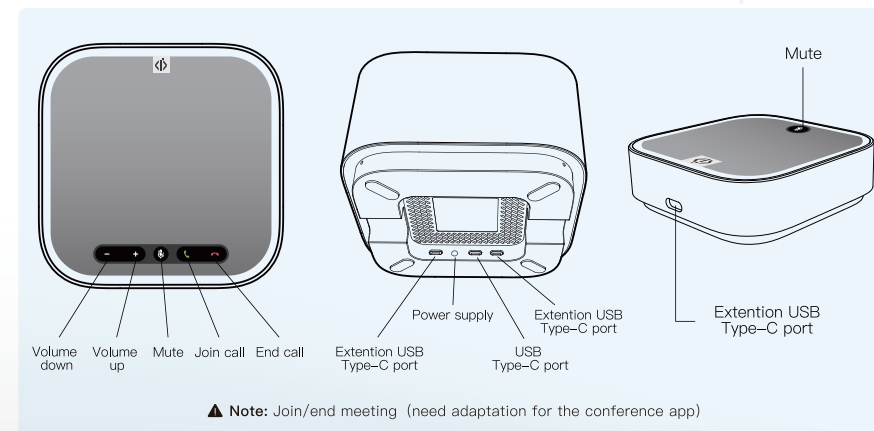
Smart Conference Speakerphone Instruction Manual

1 Product List



2 Product Description

iSpeaker A20



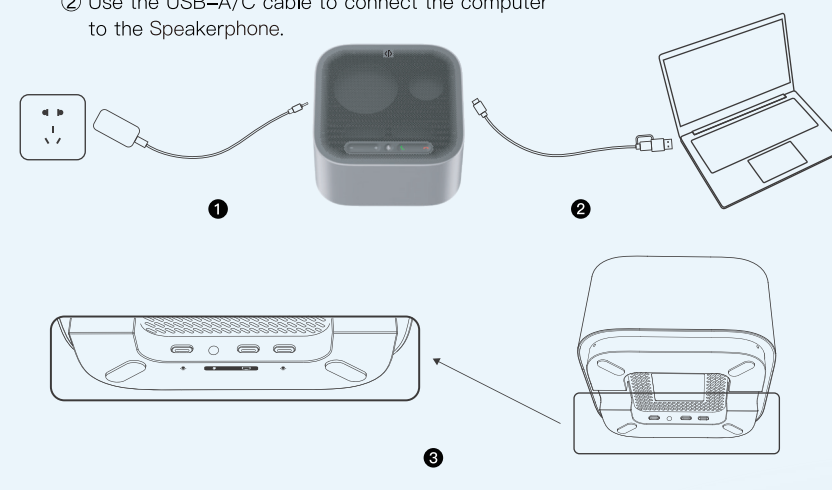
3 Quick Start Meeting Guide



(1) Connect the USB port

iSpeaker A20

- ① Use the Power cable to connect the Speakerphone to the power supply.
- ② Use the USB-A/C cable to connect the computer to the Speakerphone.



- ③ After the green light of Speakerphone is on, it can be used normally.
- ④ In the configuration of computer sound device or conference software, make sure that Speakerphone is selected. When selected, Speakerphone is ready to be used with conferencing software.

(2) Connecting Extension Microphones



In order to get better audio quality for the multi-person conference scenario, you can use the extension microphone USB cable to connect two extension microphones.



4 Light indicator

iSpeaker A20

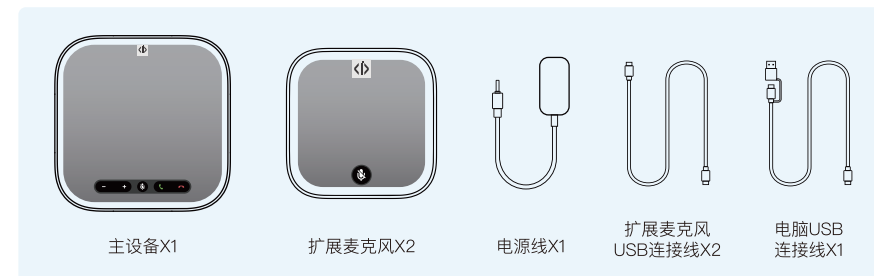
Light indicator	Device status
Green	Microphone is working
Red	Microphone is muted
Orange	Booting up / Upgrading firmware
Clockwise rotation	Connecting to computer USB port
Counterclockwise rotation	Disconnecting to the computer USB port

infobit iSpeaker A20



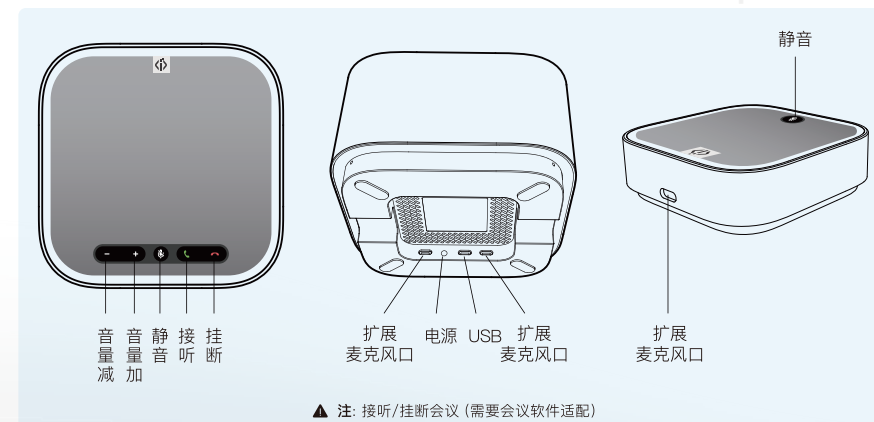
智能会议麦克风音箱使用说明书

1 产品清单



2 产品介绍

iSpeaker A20



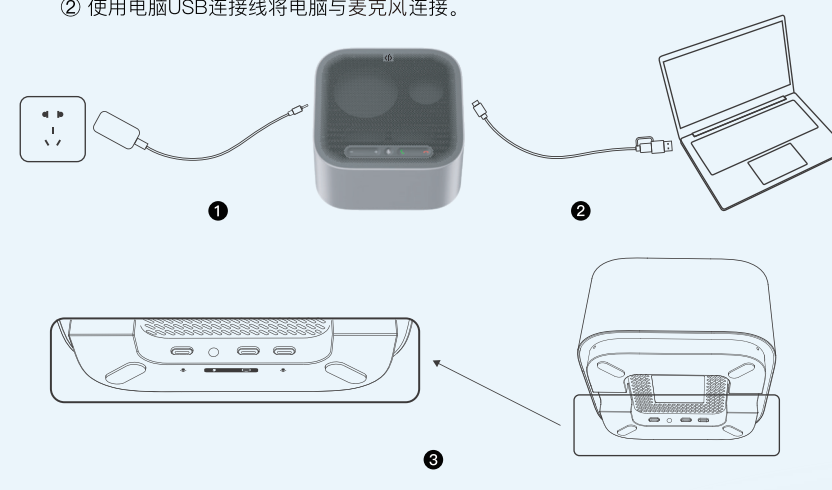
3 快速开始会议指南



1. 连接USB接口

iSpeaker A20

- ① 使用电源线连接麦克风与电源。
- ② 使用电脑USB连接线将电脑与麦克风连接。

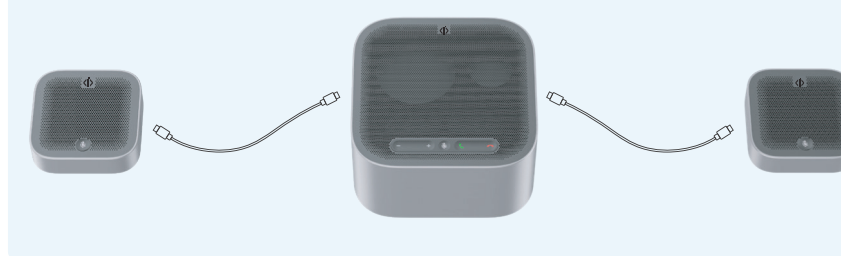


- ③ 麦克风的绿灯亮起后, 可正常使用。
- ④ 在电脑声音设备或会议软件中, 确保麦克风被选中, 选中后, 麦克风已准备好与会议软件配合使用。

2. 连接扩展麦克风



为了使得多人会议场景效果更佳, 您可以使用扩展麦克风USB连接线连接2个扩展麦克风。



4 指示灯状态含义

iSpeaker A20

灯带状态	对应的设备状态
绿色	开机后, 非麦克风静音状态
红色	麦克风静音
橙色	开机启动中 / 固件升级中
顺时针转圈	连接电脑USB口
逆时针转圈	断开电脑USB口